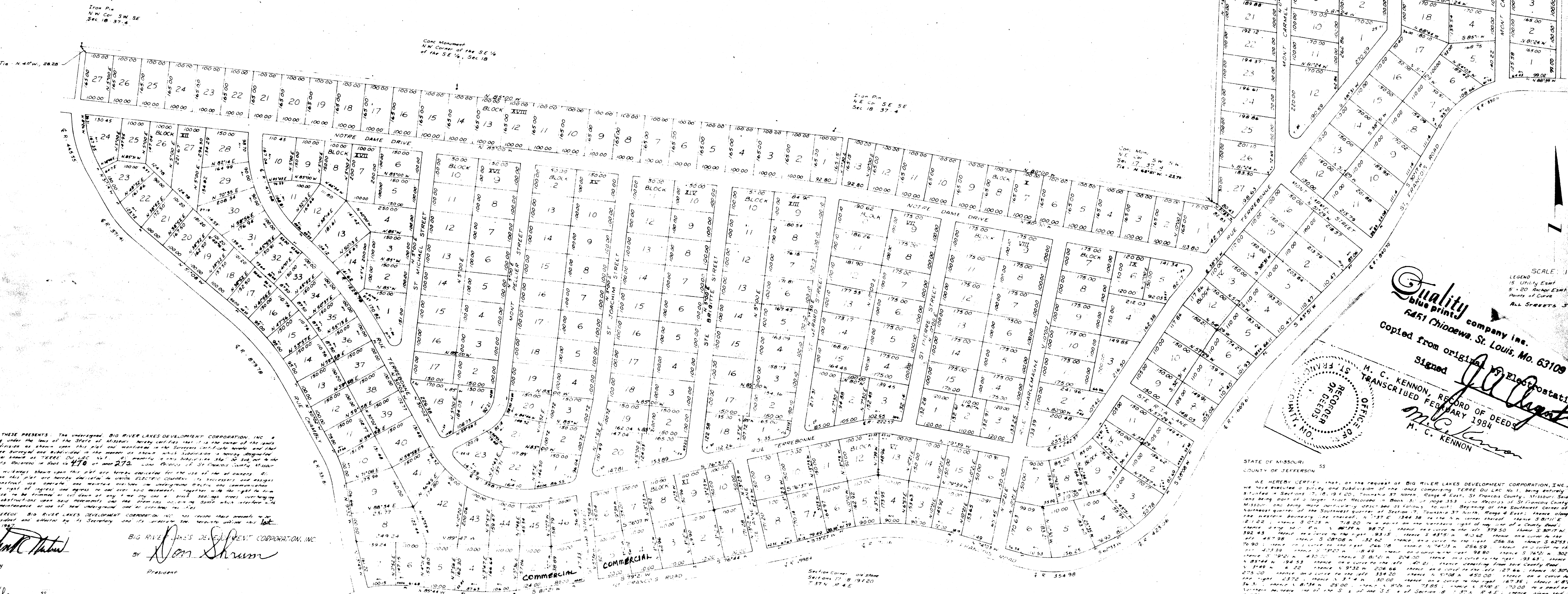


Terre Du Lac No. 1

SITUATED IN PART OF SECTIONS 17, 18, 19 & 20, T. 37 N., R. 4 E.,
ST. FRANCIS COUNTY, MISSOURI



Com. Mon.
4 1/2' x 3' 6" E. S. W.
Sec. 17, 18 & 19
T. 37 N. R. 4 E. S. 18 E.

Com. Mon.
4 1/2' x 3' 6" E. S. W.
Sec. 18, 19 & 20
T. 37 N. R. 4 E. S. 18 E.

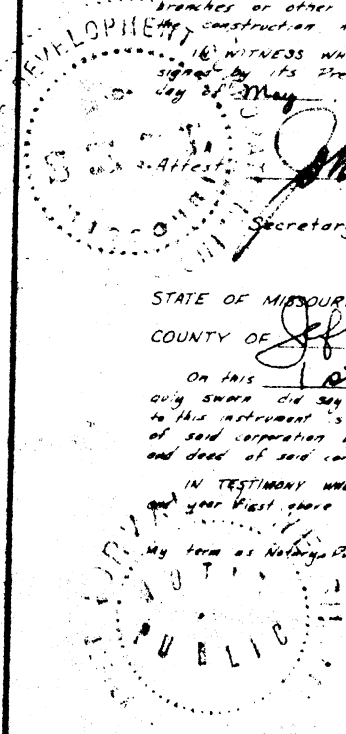
Com. Mon.
4 1/2' x 3' 6" E. S. W.
Sec. 17 & 18
T. 37 N. R. 4 E. S. 18 E.

Com. Mon.
4 1/2' x 3' 6" E. S. W.
T. 37 N. R. 4 E. S. 18 E.

KNOW ALL MEN BY THESE PRESENTS, That the undersigned, BIG RIVER LAKES DEVELOPMENT CORPORATION, INC., a corporation existing under the laws of the State of Missouri, hereby certifies that this is a true and correct copy of the plat of the subdivision of the land shown on the attached map, and that the same has been approved by the Board of Surveyors of St. Francis County, Missouri, and that the same has been recorded in the Office of the Recorder of Deeds of St. Francis County, Missouri, in Book 329, Page 55, of the Public Records of said County, Missouri, on the 15th day of May, 1967, and that the same is now a part of the Public Records of said County, Missouri.

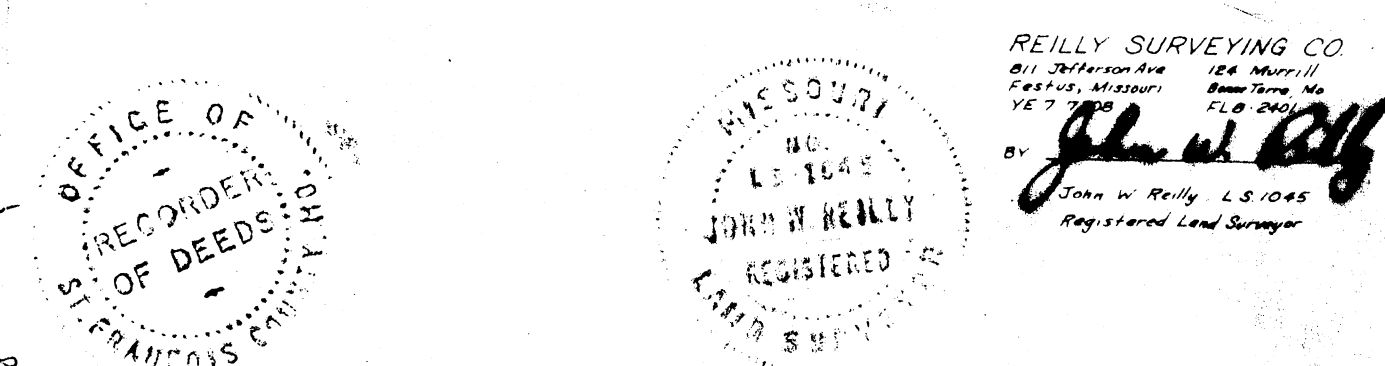
BIG RIVER LAKES DEVELOPMENT CORPORATION, INC.
By *Don Shrum*
President

STATE OF MISSOURI
COUNTY OF JEFFERSON
I, *Donnell Welch*,
Notary Public,
do hereby certify that the above and foregoing is a true and correct copy of the original of the instrument recorded in the Public Records of St. Francis County, Missouri, in Book 329, Page 55, of the Public Records of said County, Missouri, on the 15th day of May, 1967, and that the same is now a part of the Public Records of said County, Missouri.



SCALE: 1" = 200'
LEGEND
1/2" = 10' CURB
5" = 20' DRIVE EXIST.
DASHED LINE = ALL STREETS 30' WIDE
Copied from original by Electrostat Process
Signed *J. C. Kennon*
M. C. KENNON, RECORDER OF DEEDS
TRANSCRIBED FEBRUARY 1984
M. C. KENNON

STATE OF MISSOURI
COUNTY OF JEFFERSON
I, *M. C. Kennon*, Recorder of Deeds of said County, do hereby certify that the within instrument of writing was, on the 15th day of May, A. D. 1967, at 4 o'clock 16 minutes P. M., duly filed for record, and is now recorded in the Records of this office in Book 329, at page 55. IN WITNESS WHEREOF, I have hereunto set my hand and affixed my official seal at Farmington, Mo., this 15th day of May, A. D. 1967.
M. C. Kennon
Recorder



FILE NO B-329
BOOK 9
PAGE 55 PLAT 1

REILLY SURVEYING CO.
By *John W. Reilly*
John W. Reilly, L.S. 1045
Registered Land Surveyor